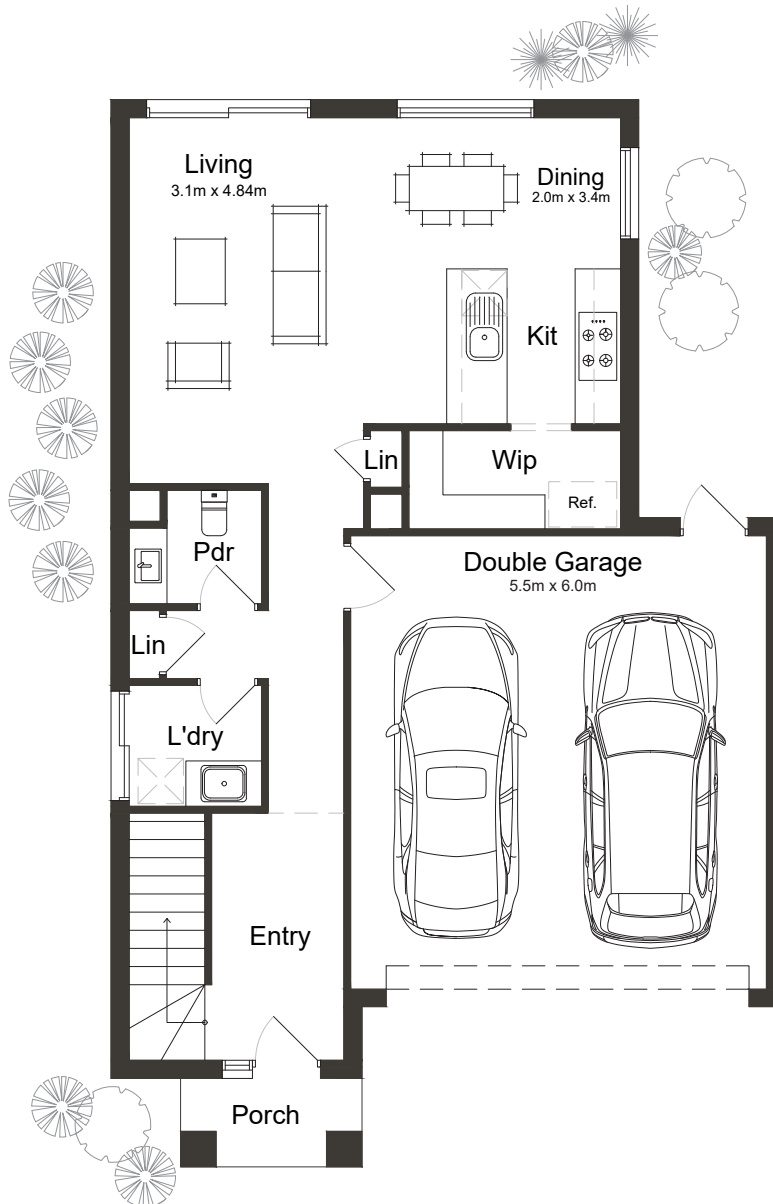


20 | Serafin

 3
  2.5
  1
  2



10.5m
Block Width

Ground Floor

House Area

Garage	36.22m ²
Portico	2.80m ²
Ground Floor	102.20m ²
First Floor	81.06m ²
Total Area	183.26m ²

Room Dimensions

Living	3.1m x 4.84m
Dining	2.0m x 3.4m
Double Garage	5.5m x 6.0m

SYMMETRIC HOMES

Homes that are more than just walls.

26 COOK STREET
PORT MELBOURNE
VICTORIA 3207

(03) 9676 2409
SYMMETRIC HOMES.COM.AU
ABN 68 133 114 628

20 | Serafin



3



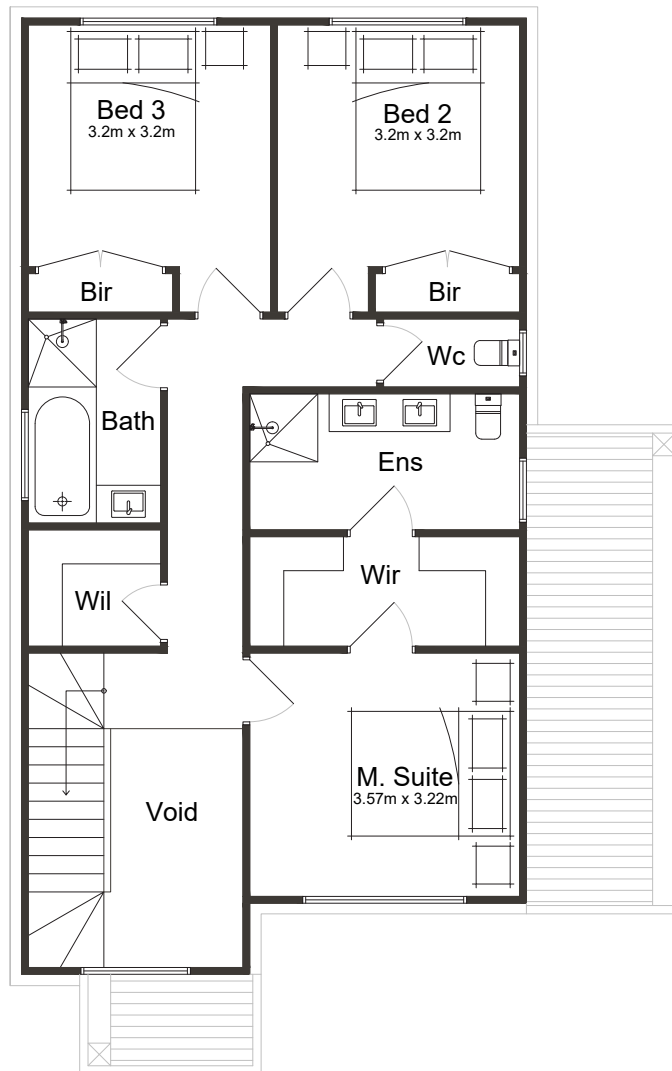
2.5



1



2



First Floor

House Area

Garage	36.22m ²
Portico	2.80m ²
Ground Floor	102.20m ²
First Floor	81.06m ²
Total Area	183.26m ²

Room Dimensions

Master Suite	3.57m x 3.22m
Bedroom 2	3.2m x 3.2m
Bedroom 3	3.2m x 3.2m