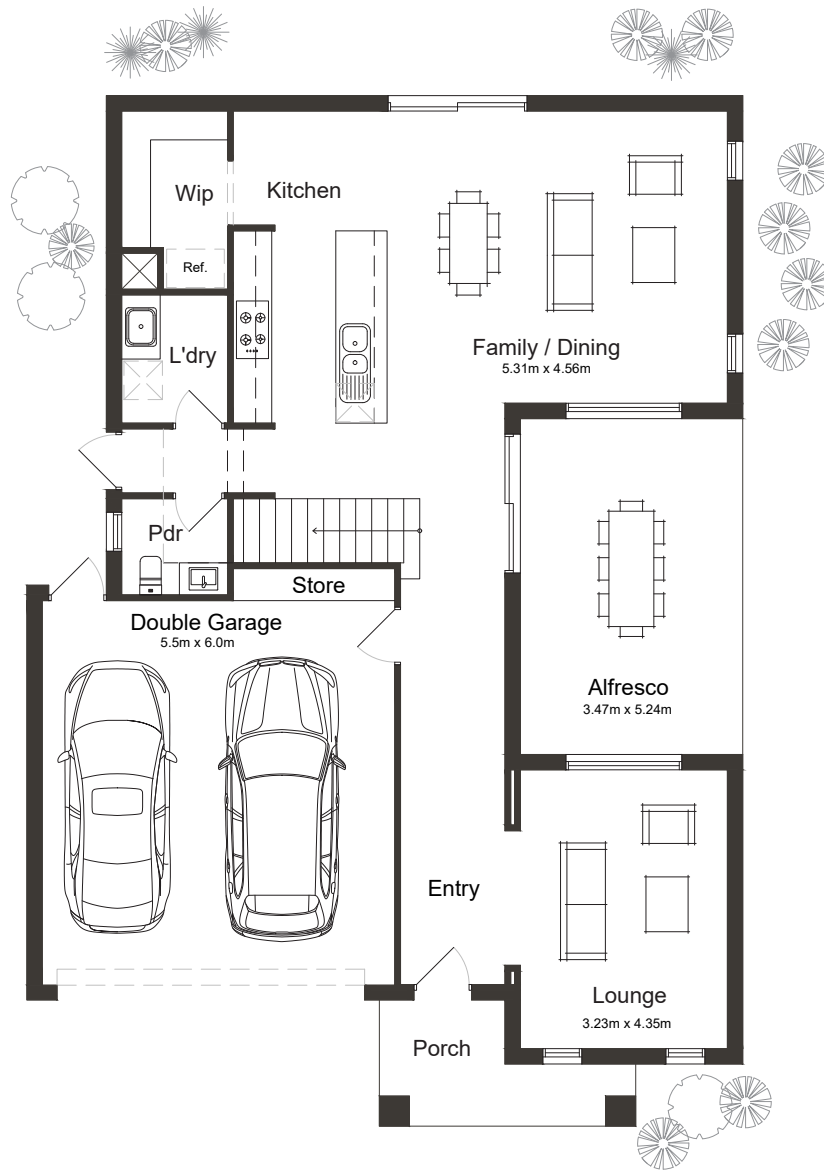


27 | Ridgefield



 4
  2.5
  2
  2



14m
Block Width

Ground Floor

House Area

Garage	36.05m ²
Portico	5.84m ²
Alfresco	18.18m ²
Ground Floor	157.68m ²
First Floor	90.89m ²
Total Area	248.57m ²

Room Dimensions

Family / Dining	5.31m x 4.56m
Lounge	3.23m x 4.35m
Alfresco	3.47m x 5.24m
Double Garage	5.5m x 6.0m

SYMMETRIC HOMES

Homes that are more than just walls.

26 COOK STREET
PORT MELBOURNE
VICTORIA 3207

(03) 9676 2409
SYMMETRICHOMES.COM.AU
ABN 68 133 114 628

27 | Ridgefield



4



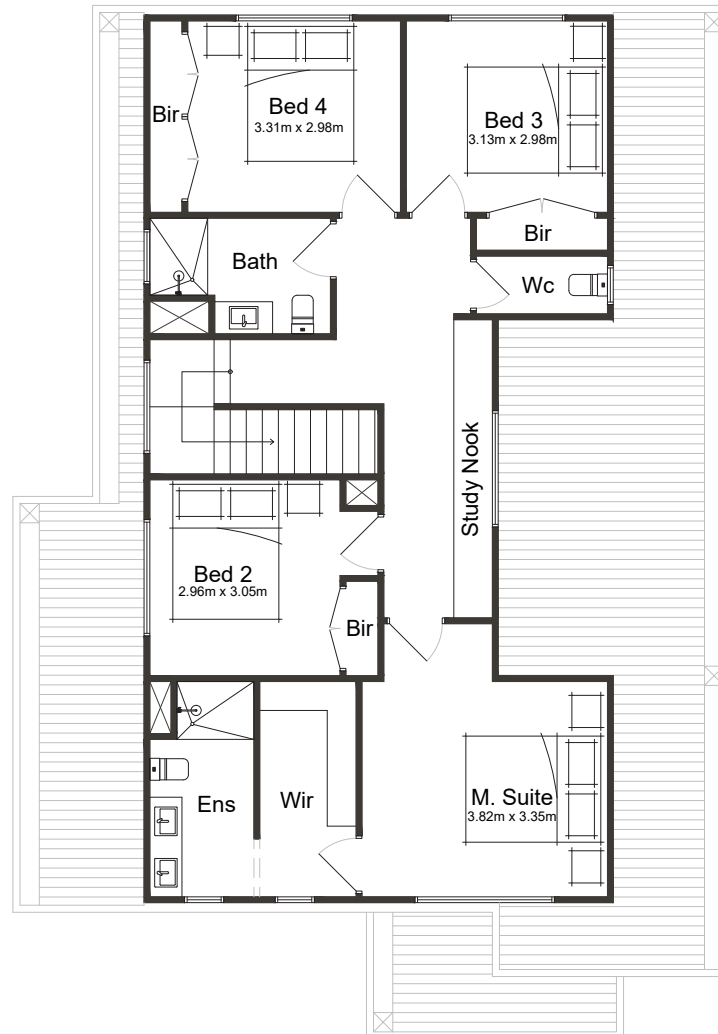
2.5



2



2



First Floor

House Area

Garage	36.05m ²
Portico	5.84m ²
Alfresco	18.18m ²
Ground Floor	157.68m ²
First Floor	90.89m ²
Total Area	248.57m ²

Room Dimensions

Master Suite	3.82m x 3.35m
Bedroom 2	3.96m x 3.05m
Bedroom 3	3.13m x 2.98m
Bedroom 4	3.31m x 2.98m

SYMMETRIC HOMES

Homes that are more than just walls.

26 COOK STREET
PORT MELBOURNE
VICTORIA 3207

(03) 9676 2409
SYMMETRICHOMES.COM.AU
ABN 68 133 114 628