

21 | Kayden



3



2.5



1

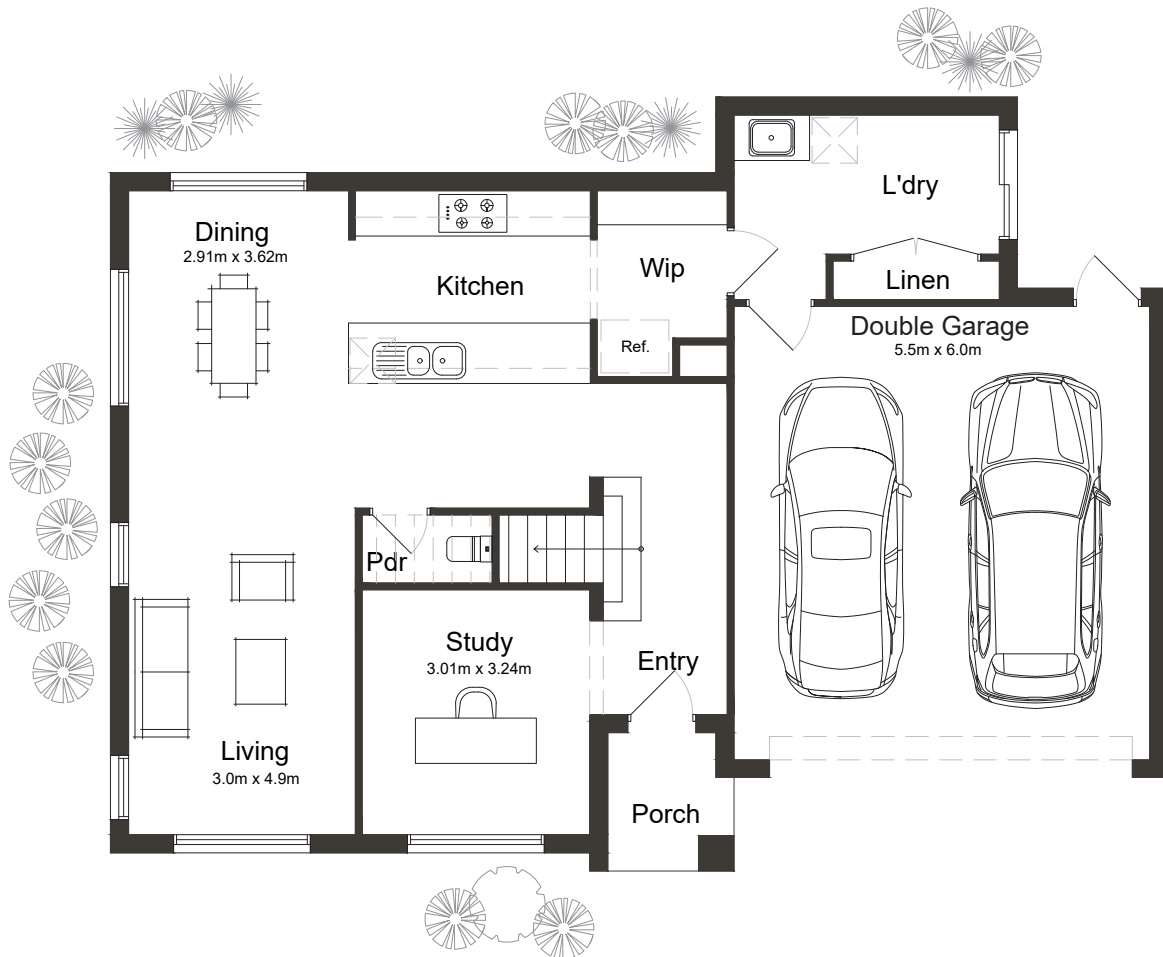


2



16m

Block Width



Ground Floor

House Area

Garage	36.23m ²
Portico	2.91m ²
Ground Floor	121.57m ²
First Floor	70.47m ²
Total Area	192.04m ²

Room Dimensions

Living	3.0m x 4.9m
Dining	2.91m x 3.62m
Study	3.01m x 3.24m
Double Garage	5.5m x 6.0m

SYMMETRIC HOMES

Homes that are more than just walls.

26 COOK STREET
PORT MELBOURNE
VICTORIA 3207

(03) 9676 2409
SYMMETRICHOMES.COM.AU
ABN 68 133 114 628

21 | Kayden



3



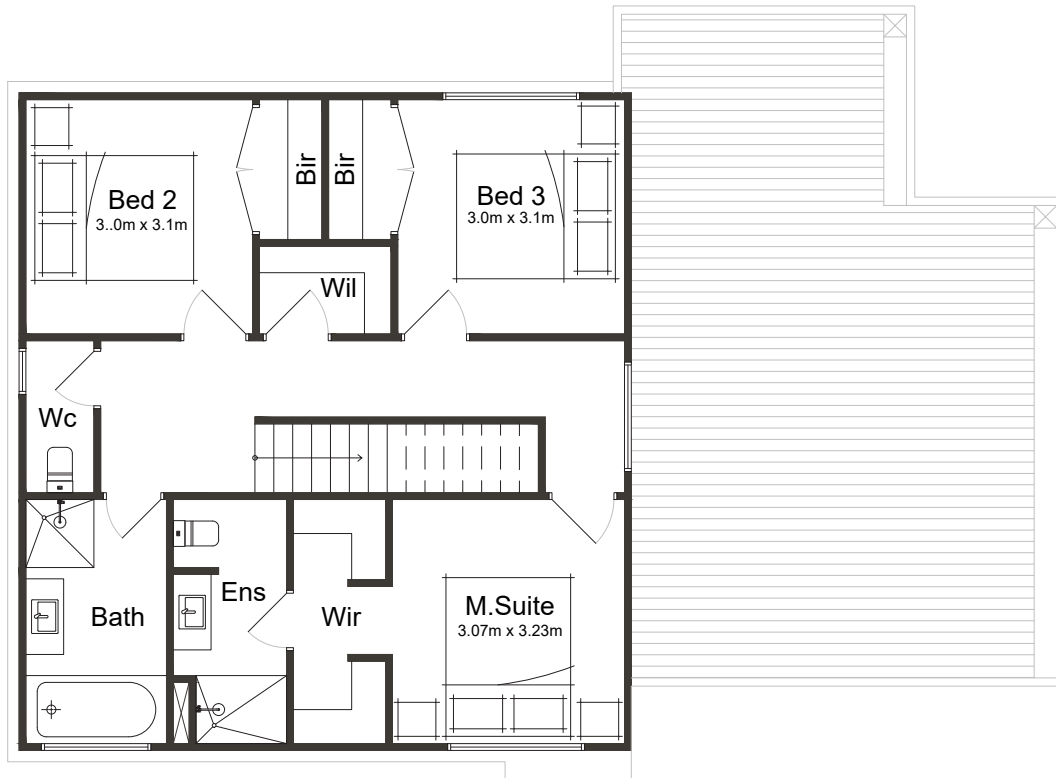
2.5



1



2



First Floor

House Area

Garage	36.23m ²
Portico	2.91m ²
Ground Floor	121.57m ²
First Floor	70.47m ²
Total Area	192.04m ²

Room Dimensions

Master Suite	3.07m x 3.23m
Bedroom 2	3.0m x 3.01m
Bedroom 3	3.0m x 3.01m